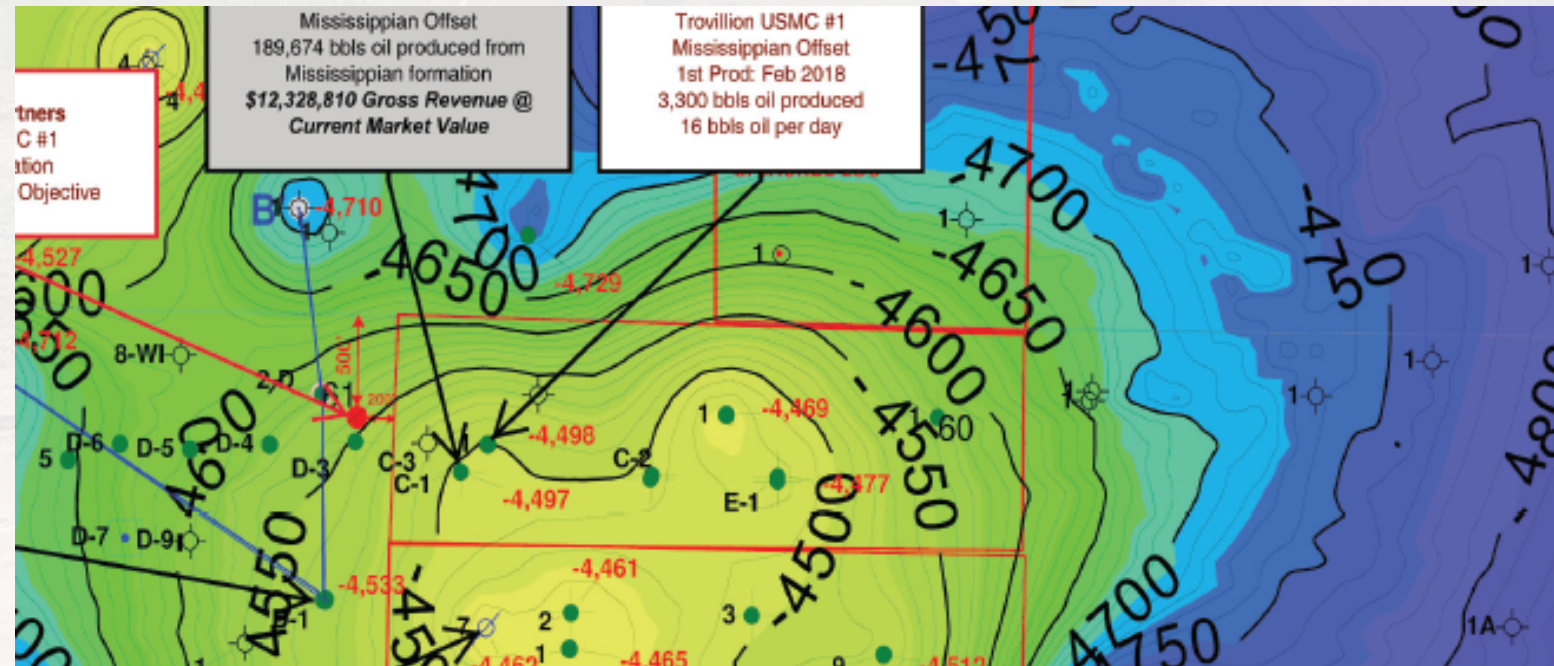




T. Spitzer LP Well Overview

Well Summary

In summary, Veteran Exploration and Production LLC recommends drilling the T. Spitzer well to a depth of 6040' or 100' into the Ellenburger dolomite. The main objective is the Mississippian reef. This formation was productive in off-setting wells and has produced over 190,000 BO in a well 600' to the SE from the Caddo 40 and Mississippian. **Completed in 8/2019**









Tunnel Oil & Gas Funds Overview

Your Tunnel to Industry Energy Investing

Tunnel combines digital information innovations with vast oil and gas operational and investment expertise to democratize direct oil and gas investing.

Key Well Stats

	Location Archer County, TX		Well Type Conventional		Basin Fort Worth Basin North Central TX
	Formations Mississippian & Caddo lime		Depth 6000 FT		API number 42-009-43192

Financial Performance as of 10/14/2022

Total Investment:	\$800,000
Total Return:	\$570,000
Last 3 months net cash flow:	\$22,265
Total Production:	19,000 bbls oil
Current Production:	8 bpd

16%
***ROR**



CONTACT A TEAM MEMBER AT TUNNEL OIL & GAS FUNDS TO LEARN MORE ABOUT INVESTING